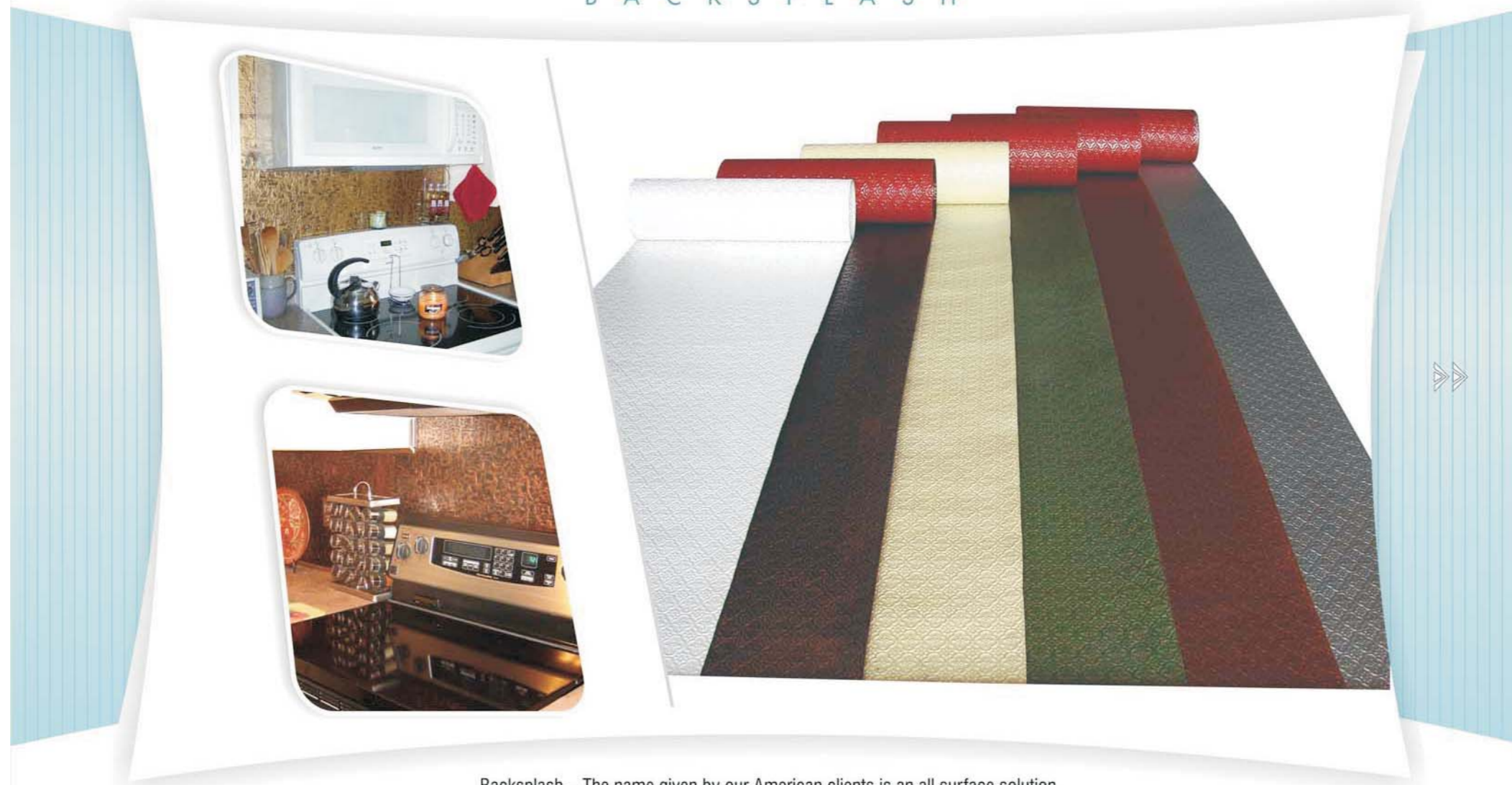


B A C K S P L A S H



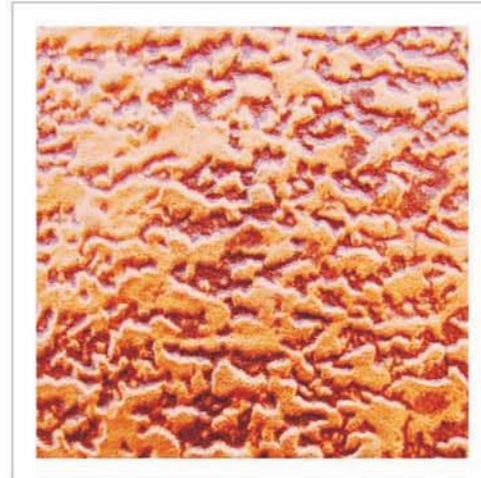
Backsplash – The name given by our American clients is an all surface solution.
Comes in a convenient roll form and you can use them practically anywhere, where you can find a smooth and plain surface.
To name a few, wall, furniture, pillar, counter top, cabinet, partitions etc.
Or just use them as an accent to support other designs, products or the whole interior concept.
We call it, single solution of endless options of applications.



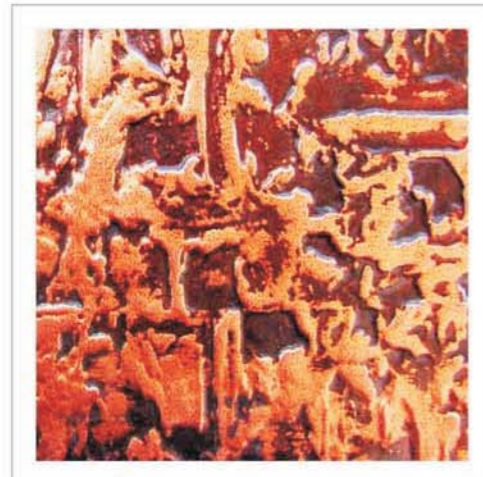
Backsplash



WC 40 Urban Silver



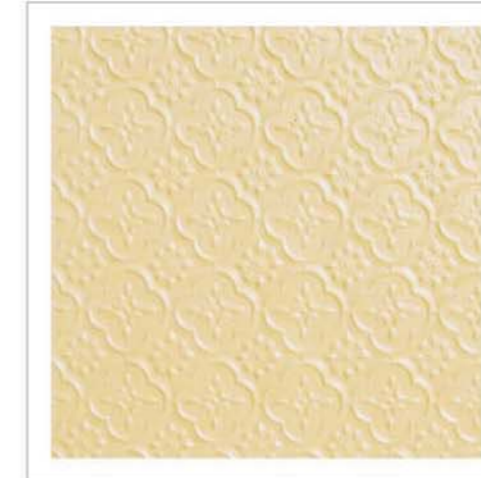
WC 30 Antique Copper



WC 40 Antique Copper



WC 30 Antique Gold



WC 20 Creme Pearl



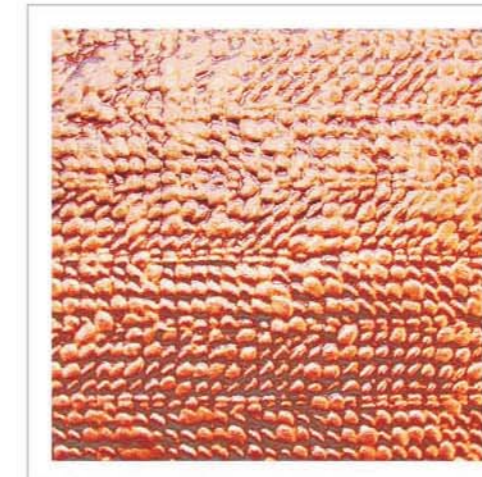
WC 50 Antique Gold



WC 10 Antique Gold



WC 20 White Pearl



WC 50 Antique Copper



WC - 10 Antique Copper



Backsplash



Size: 2' wide roll in standard length of 25' (feet) **Thickness:** 0.25 mm **Designs:** 5 **Colors:** Pastel, pearl, metallic, and wooden finish - as per page no. 45

1. Prepare the surface by removing all the dust, moisture, loose paint etc.
2. Measure the total length of the piece you wish to install. Cut the piece at the desired length, with regular scissors and fit the piece at the appropriate place.
3. Apply any rubber adhesive on the back of the backsplash and on the wall (where you are going to attach it).
4. Let the adhesive dry till it becomes tacky and attach the piece to the wall, squeezing out all the air from behind the backsplash.

- › Ready to install
- › Easy and fast installation
- › No, painting or polishing required
- › 100% waterproof
- › Long lasting and durable
- › Easy to work with